

Mă rog ca toți să fie una, cum Tu, Tată,
ești în Mine, și Eu în Tine; ca, și ei să fie una în noi... Ioan 17:21

36. LEAGA-NE, DOAMNE

BOB GILLMAN

BOB GILLMAN

TRAD. ANON.

$\text{♩} = 96$

Lea - gă - ne, Doam - ne, pe toți îm - pre - u - nă Cu

The first system of the hymn consists of two staves. The top staff is in treble clef and the bottom staff is in bass clef. The key signature has one flat (B-flat) and the time signature is 3/4. The tempo is marked as quarter note = 96. The melody is written in the treble clef, and the bass line is in the bass clef. The lyrics are written below the staves.

lan - țuri ce nu pot fi rup - te; Lea - gă - ne,

The second system of the hymn consists of two staves. The top staff is in treble clef and the bottom staff is in bass clef. The key signature has one flat (B-flat) and the time signature is 3/4. The melody is written in the treble clef, and the bass line is in the bass clef. The lyrics are written below the staves.

Doam - ne, pe toți îm - pre - u - nă, O, lea - gă - ne

The third system of the hymn consists of two staves. The top staff is in treble clef and the bottom staff is in bass clef. The key signature has one flat (B-flat) and the time signature is 3/4. The melody is written in the treble clef, and the bass line is in the bass clef. The lyrics are written below the staves.

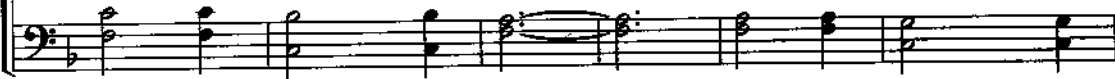
în dra - gos - te. Es - te un sin - gur Domn,

The fourth system of the hymn consists of two staves. The top staff is in treble clef and the bottom staff is in bass clef. The key signature has one flat (B-flat) and the time signature is 3/4. The melody is written in the treble clef, and the bass line is in the bass clef. The lyrics are written below the staves.

21



es - te-un sin - gur Fiu, ——— Es - te-un sin - gur



27



Duh, ——— de a - ce - ia-Ți cân - tăm. ———

